

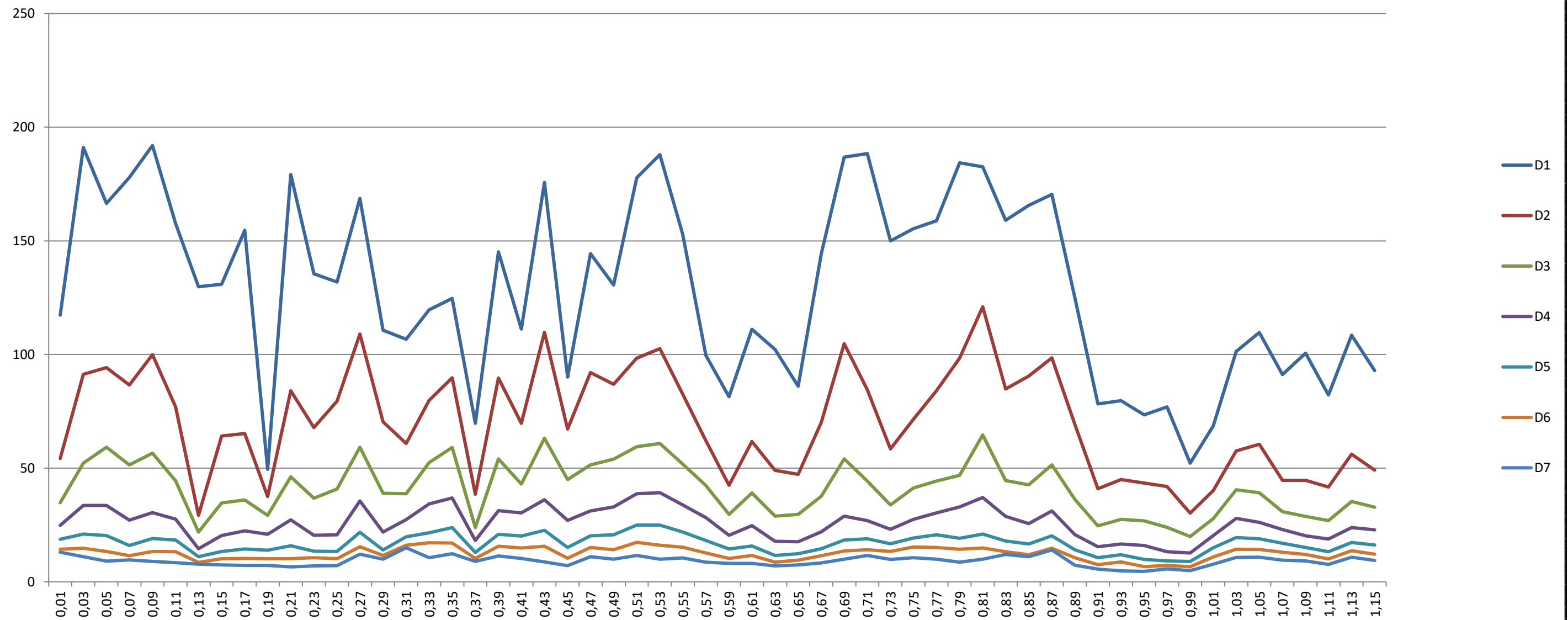



<div><div>SOLOCAP</div><div>GEOTECNOLOGIA</div></div>			LEVANTAMENTO DEFLECTOMÉTRICO com utilização do “Falling Weight Deflectometer” (FWD) Modelo TBTFWD-NJ-MV - DNER PRO 273/96												ANEXO Nº 18.1-R-10-PD	
															DATA: 04/09/2023	
															RELATÓRIO Nº: 660-401000/23	
															OS Nº: 660/23	
CLIENTE:			CÂMARA MUNICIPAL ENTRE RIOS DE MINAS													
OBRA/TRECHO:			ENTRE RIOS DE MINAS/MG													
PISTA:			R. RUI BARBOSA - PISTA DIREITA													
SENTIDO:			ESTR. P/ PTE. FUNDA													
KM	Target Load kN	Target Load (Kgf)	UNIDADE DAS LEITURAS (x10 <sup>-2</sup> mm)							Temp (°C)		Coordenadas		RAIO	Data e Hora	Obs.
			D1	D2	D3	D4	D5	D6	D7	Ar	Pav.	Latitude	Longitude			
0.01	41,1	4.191	117	54	35	25	19	14	13	30.2	43.2	-20,66666	-44,07378	43	31/08/2023 12:38	
0.03	40,4	4.120	191	91	52	34	21	15	11	30.2	44.4	-20,66676	-44,07393	26	31/08/2023 12:39	
0.05	40,8	4.160	167	94	59	34	20	13	9	30.4	45.0	-20,66688	-44,07409	35	31/08/2023 12:40	
0.07	41,6	4.242	178	87	51	27	16	12	10	30.4	44.7	-20,66704	-44,07421	29	31/08/2023 12:40	
0.09	40,7	4.150	192	100	57	30	19	13	9	30.4	43.7	-20,66721	-44,07433	27	31/08/2023 12:41	
0.11	42,3	4.313	158	77	44	28	18	13	8	30.4	45.2	-20,66739	-44,07443	32	31/08/2023 12:42	
0.13	42,6	4.344	130	29	22	15	11	8	8	30.5	44.3	-20,66751	-44,07451	30	31/08/2023 12:42	
0.15	40,4	4.120	131	64	35	20	13	10	7	30.6	47.0	-20,66756	-44,07475	38	31/08/2023 12:43	
0.17	41,4	4.222	155	65	36	22	15	10	7	30.7	46.5	-20,66747	-44,07489	30	31/08/2023 12:44	
0.19	43,5	4.436	50	38	29	21	14	10	7	30.8	42.7	-20,66731	-44,07499	194	31/08/2023 12:44	
0.21	40,3	4.109	179	84	46	27	16	10	7	30.8	44.0	-20,66711	-44,07508	27	31/08/2023 12:45	
0.23	40,6	4.140	136	68	37	20	13	11	7	30.9	46.6	-20,66692	-44,07516	38	31/08/2023 12:45	
0.25	42,0	4.283	132	79	41	21	13	10	7	31.1	46.4	-20,66674	-44,07524	44	31/08/2023 12:46	
0.27	40,4	4.120	169	109	59	36	22	15	12	31.2	43.8	-20,66658	-44,07540	37	31/08/2023 12:47	
0.29	42,3	4.313	111	70	39	22	14	12	10	31.2	44.9	-20,66647	-44,07551	56	31/08/2023 12:47	
0.31	41,9	4.273	107	61	39	27	20	16	15	31.2	43.0	-20,66636	-44,07563	55	31/08/2023 12:48	
0.33	40,8	4.160	120	80	52	34	22	17	11	31.2	44.3	-20,66626	-44,07582	58	31/08/2023 12:49	
0.35	41,1	4.191	125	90	59	37	24	17	12	31.5	45.9	-20,66624	-44,07600	62	31/08/2023 12:49	
0.37	42,7	4.354	70	39	24	18	13	10	9	31.5	46.0	-20,66628	-44,07622	81	31/08/2023 12:50	
0.39	41,5	4.232	145	90	54	31	21	16	11	31.5	46.4	-20,66639	-44,07642	43	31/08/2023 12:50	
0.41	41,9	4.273	111	70	43	30	20	15	10	31.7	47.5	-20,66650	-44,07652	57	31/08/2023 12:51	
0.43	39,6	4.038	176	110	63	36	23	16	9	31.7	47.1	-20,66664	-44,07658	35	31/08/2023 12:52	
0.45	41,7	4.252	90	67	45	27	15	10	7	31.8	42.6	-20,66683	-44,07663	92	31/08/2023 12:52	
0.47	41,9	4.273	144	92	51	31	20	15	11	32.1	46.7	-20,66702	-44,07664	43	31/08/2023 12:53	
0.49	41,2	4.201	131	87	54	33	21	14	10	31.9	47.1	-20,66722	-44,07664	52	31/08/2023 12:53	
0.51	40,7	4.150	178	98	59	39	25	17	12	32.1	47.1	-20,66740	-44,07665	32	31/08/2023 12:54	
0.53	40,7	4.150	188	103	61	39	25	16	10	32.3	48.0	-20,66762	-44,07668	29	31/08/2023 12:55	
0.55	42,0	4.283	153	83	52	34	22	15	11	31.4	47.5	-20,66779	-44,07669	36	31/08/2023 12:55	
0.57	42,0	4.283	100	62	42	28	18	13	9	32.3	49.1	-20,66796	-44,07669	66	31/08/2023 12:56	
0.59	42,8	4.364	81	43	30	20	14	10	8	32.3	47.0	-20,66820	-44,07669	69	31/08/2023 12:57	
0.61	42,2	4.303	111	62	39	25	16	12	8	32.5	38.2	-20,66836	-44,07670	52	31/08/2023 12:57	
0.63	42,4	4.324	102	49	29	18	12	9	7	32.5	34.6	-20,66854	-44,07673	49	31/08/2023 12:58	
0.65	41,4	4.222	86	47	30	18	12	9	7	32.5	38.9	-20,66873	-44,07680	66	31/08/2023 12:58	
0.67	40,0	4.079	144	70	38	22	15	12	8	32.7	45.6	-20,66894	-44,07686	35	31/08/2023 12:59	
0.69	40,0	4.079	187	105	54	29	18	14	10	32.7	44.6	-20,66917	-44,07691	29	31/08/2023 13:00	
0.71	42,3	4.313	188	85	44	27	19	14	12	32.9	47.1	-20,66932	-44,07694	25	31/08/2023 13:00	
0.73	43,5	4.436	150	58	34	23	17	13	10	32.9	47.6	-20,66951	-44,07697	30	31/08/2023 13:01	
0.75	42,1	4.293	155	71	41	28	19	15	11	32.9	47.3	-20,66967	-44,07699	32	31/08/2023 13:01	
0.77	40,7	4.150	159	84	44	30	21	15	10	33.1	46.9	-20,66984	-44,07703	33	31/08/2023 13:02	
0.79	40,7	4.150	184	98	47	33	19	14	9	33.2	47.8	-20,67007	-44,07706	28	31/08/2023 13:03	
0.81	40,2	4.099	183	121	65	37	21	15	10	33.4	48.9	-20,67022	-44,07708	35	31/08/2023 13:03	
0.83	42,3	4.313	159	85	45	29	18	13	12	33.4	49.1	-20,67041	-44,07711	33	31/08/2023 13:04	
0.85	42,5	4.334	166	91	43	26	17	12	11	33.6	49.5	-20,67060	-44,07714	32	31/08/2023 13:05	
0.87	40,9	4.171	170	99	51	31	20	15	14	33.5	47.9	-20,67078	-44,07716	33	31/08/2023 13:05	
0.89	43,1	4.395	125	69	36	21	14	11	7	33.5	46.9	-20,67100	-44,07720	43	31/08/2023 13:06	
0.91	41,8	4.262	78	41	25	15	11	8	6	33.6	45.9	-20,67115	-44,07722	69	31/08/2023 13:06	
0.93	41,1	4.191	80	45	27	17	12	9	5	33.6	32.2	-20,67135	-44,07724	72	31/08/2023 13:07	
0.95	41,5	4.232	73	43	27	16	10	7	5	33.9	30.7	-20,67157	-44,07725	82	31/08/2023 13:08	
0.97	41,6	4.242	77	42	24	13	9	7	6	34.4	33.1	-20,67173	-44,07727	71	31/08/2023 13:08	
0.99	41,8	4.262	52	30	20	13	9	7	5	34.0	36.2	-20,67195	-44,07730	115	31/08/2023 13:09	
1.01	43,9	4.476	69	40	28	20	15	11	8	34.1	34.0	-20,67217	-44,07734	90	31/08/2023 13:09	
1.03	40,9	4.171	101	58	41	28	19	14	11	34.0	45.4	-20,67239	-44,07737	60	31/08/2023 13:10	
1.05	41,1	4.191	110	61	39	26	19	14	11	34.1	46.5	-20,67253	-44,07740	52	31/08/2023 13:11	
1.07	41,9	4.273	91	45	31	23	17	13	10	34.3	47.9	-20,67270	-44,07741	58	31/08/2023 13:11	
1.09	42,4	4.324	101	45	29	20	15	12	9	34.4	37.6	-20,67287	-44,07743	49	31/08/2023 13:12	
1.11	42,4	4.324	82	42	27	19	13	10	8	34.4	50.4	-20,67306	-44,07746	65	31/08/2023 13:12	
1.13	42,2	4.303	108	56	35	24	17	14	11	34.4	36.2	-20,67323	-44,07747	50	31/08/2023 13:13	
1.15	39,9	4.069	93	49	33	23	16	12	9	34.4	49.5	-20,67342	-44,07748	60	31/08/2023 13:14	
1.17	41,3	4.211	94	51	32	20	14	10	7	34.6	49.0	-20,67362	-44,07750	60	31/08/2023 13:14	
1.19	41,9	4.273	76	41	26	18	13	10	8	34.6	47.4	-20,67383	-44,07754	74	31/08/2023 13:15	
1.21	38,9	3.967	72	40	27	19	14	11	8	34.8	46.9	-20,67405	-44,07756	81	31/08/2023 13:15	
1.23	40,9	4.171	114	65	42	26	18	13	9	34.8	46.9	-20,67424	-44,07758	52	31/08/2023 13:16	
ANALISE ESTATÍSTICA																
CONCEITO		Deflexão - 0,01mm	Nº ocorrências		%		Extensão -m									
Nº de Estações totais			62		100		1.240									

	<b>LEVANTAMENTO DEFLECTOMÉTRICO com utilização do “Falling Weight Deflectometer” (FWD) - DNER PRO 273/96</b>		18.1-R-10-PD
			04/09/2023
			RELATÓRIO N°:
			0
			OS N°:
			0
CLIENTE:	CÂMARA MUNICIPAL ENTRE RIOS DE MINAS		
OBRA/TRECHO:	ENTRE RIOS DE MINAS/MG		
PISTA:	R. RUI BARBOSA - PISTA DIREITA		
SENTIDO:	ESTR. P/ PTE. FUNDA		



	<b>LEVANTAMENTO DEFLECTOMÉTRICO</b> com utilização do “Falling Weight Deflectometer” (FWD) - DNER PRO 273/96	DATA:
		04/09/2023
		RELATÓRIO N°:
		0
		OS N°:
		0
CLIENTE:	CÂMARA MUNICIPAL ENTRE RIOS DE MINAS	
OBRA/TRECHO:	ENTRE RIOS DE MINAS/MG	
PISTA:	R. RUI BARBOSA - PISTA DIREITA	
SENTIDO:	ESTR. P/ PTE. FUNDA	

